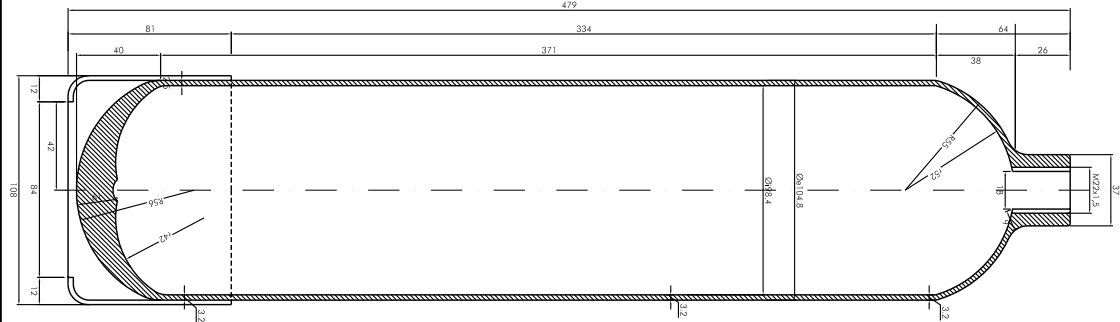
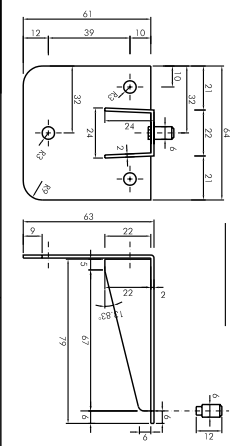


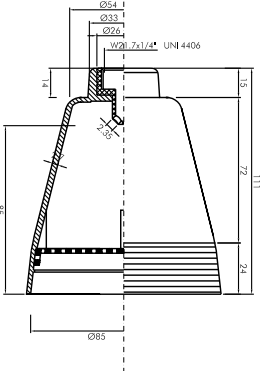
SCALA 1:1



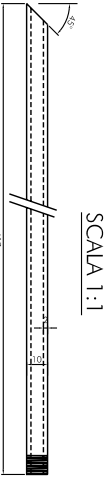
SCALA 1:1



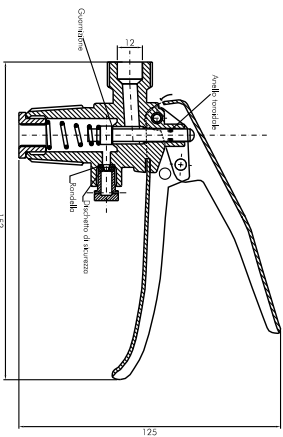
SCALA 1:1



SCALA 1:1



SCALA 1:1



SCALA 1:1



SCALA 1:1



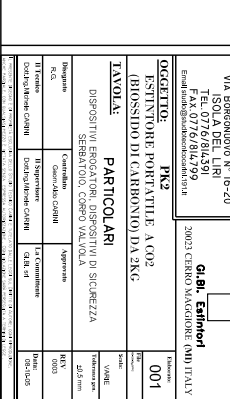
SCALA 1:1



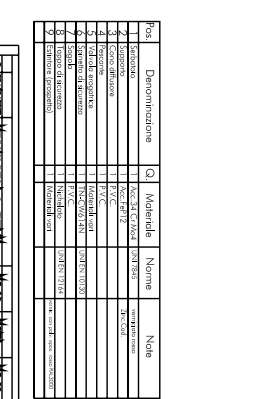
SCALA 1:1



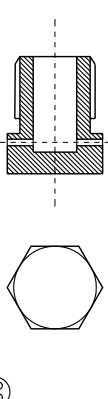
SCALA 1:1



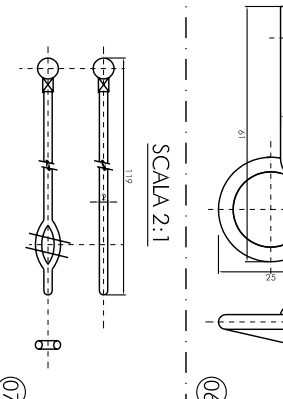
SCALA 1:1



SCALA 1:1



SCALA 1:1



SCALA 1:1

		<b>COMITENTE:</b> <b>G.B. Estimator</b> 30023 CERANO MARCONNE - CN (TO) ITALIA	
<b>STUDIO TECNICO</b> <b>CARINI</b> VIA BORGONOVIO N° 16-20 ISOLA DEL LIRI 01031 - 01032 - 01033 FAX 0779/814799 Email: info@studiocarini.com		<b>OGGETTO:</b> PR2 <b>ESTINTORE PORTATILE A CO2</b> <b>(BOSSO) DI CARBONIO DA 3KG</b> <b>TAVOLA</b> <b>PARTICOLARI</b> DISPOSITIVI ELETTRICI PER LA SICUREZZA SERBATOIO, CORPO VALVOLA	
Disegnato R.A.S.	Computato Giancarlo Carini	Approvato G.B. Estimator	Data 05/04/08
Distributore Carlo Marconi Carini	Distributore Carlo Marconi Carini	Data di 04/04/08	Data 05/04/08

Pos.	Denominazione	Q.	Materiale	Nome	Note
1	Serviziatura	1	Acciaio	UNI 4406	
2	Serviziatura	1	Acciaio	UNI 4406	
3	Serviziatura	1	Acciaio	UNI 4406	
4	Serviziatura	1	Acciaio	UNI 4406	
5	Serviziatura	1	Acciaio	UNI 4406	
6	Serviziatura	1	Acciaio	UNI 4406	
7	Serviziatura	1	Acciaio	UNI 4406	
8	Serviziatura	1	Acciaio	UNI 4406	
9	Serviziatura	1	Acciaio	UNI 4406	
10	Serviziatura	1	Acciaio	UNI 4406	